

PONTA DELGADA AD

1 LOCALIZAÇÃO

PONTA DELGADA – JOÃO PAULO II
2KM (1.08NM) BRG 286° GEO da Cidade (Porto)

2 DADOS DE REFERÊNCIA AD

LAT: 37 44 31N
LONG: 025 41 52W

Elevação: 79m/259FT
THR RWY12 374445.80N0254238.24W
elevação: 79m
THR RWY 30 374418.90N0254112.86W
elevação 57.1m

Ondulação do Geóide:
56.693m

Temperatura de Referência:
23°C (AUG)

Declinação Mag: 07° W (2020)
Variação Anual: 0.17° Decrescente

3 ALTITUDE DE TRANSIÇÃO

6000FT
Classificação do Espaço Aéreo: C

4 TRÁFEGO AUTORIZADO

IFR/VFR

5 HORÁRIO DE OPERAÇÃO

Horário Operacional Aeródromo:
06:15 / 24:00 LMT

Administração do Aeródromo:
Segunda-Sexta 09:00/17:45 LMT

Alfândega:
06:00/24:00 LMT

Saúde
06:00/24:00 LMT
Vet. - 8 horas PPR
Tel +351 962374517

1 LOCATION

PONTA DELGADA – JOÃO PAULO II
2KM (1.08NM) BRG 286° GEO from City (DOCK)

2 AD REFERENCE DATA

LAT: 37 44 31N
LONG: 025 41 52W

Elevation: 79m/259FT
THR RWY12 374445.80N0254238.24W
elevation: 79m
THR RWY 30 374418.90N0254112.86W
elevation: 57.1m

Geoid undulation:
56.693m

Ref. temperature:
23°C (AUG)

Mag Var: 07° W (2020)
Annual change: 0.17° Decreasing

3 TRANSITION ALTITUDE

6000FT
Airspace Classification: C

4 APPROVED TRAFFIC

IFR/VFR

5 HOURS OF OPERATION

Aerodrome Operational Hours:
06:15 / 24:00 LMT

AD Administration:
Monday to Friday 09:00 / 17:45 LMT

Customs and immigration:
06:00/24:00 LMT

Health and sanitation:
06:00/24:00 LMT
Vet. - 8 horas PPR
Phone +351 962374517

AIS Briefing :
06:00/24:00 LMT

ATS Reporting Office (ARO):
06:00/24:00 LMT

METEO: H24

Tel: +351 296282922
Fax: +351 296305676
Email: lppd@ipma.pt

Centro de Meteorologia Aeronáutica associado:
Ponta Delgada AMO

ATS: H24

Combustíveis:
06:00/24:00 LMT

Handling:
06:00/24:00 LMT

Segurança: H24

6 ADMINISTRAÇÃO DO AD

Endereço:
ANA Aeroportos de Portugal, SA
Aeroporto João Paulo II
Ilha de São Miguel – Açores
9500-749 – RÊLVA

Tel: +351.296.205400;
+351.296.205436

Fax: +351.296.286923 and
+351.296.205429

AFS: LPPDYDYA
SITA: BOHBBXH
Email: azores.airports@ana.pt
URL: www.ana.pt

7 SERVIÇO DE FRONTEIRAS

Serviço existente

8 COMBUSTÍVEL E LUBRIFICANTE

JET A1
BTPO2389 - Turbo Oil and BPTO2380 -
Turbo Oil

Oxigénio e serviço associado mediante acordo
com SATA Air Açores-Manutenção.

AIS Briefing Office:
06:00/24:00 LMT

ATS Reporting Office (ARO):
06:00/24:00 LMT

MET Briefing Office: H24

Phone:+351 296282922
Fax: +351 296305676
Email: lppd@ipma.pt

Associated MET Office: Ponta Delgada AMO

ATS: H24

Fuelling:
06:00/24:00 LMT

Handling:
06:00/24:00 LMT

Security: H24

6 AD ADMINISTRATION

Post:
ANA Aeroportos de Portugal, SA
Aeroporto João Paulo II
Ilha de São Miguel – Açores
9500-749 – RÊLVA

Phone: +351.296.205400;
+351.296.205436

Fax: +351.296.286923 and
+351.296.205429

AFS: LPPDYDYA
SITA: BOHBBXH
Email: azores.airports@ana.pt
URL: www.ana.pt

7 CUSTOMS

Yes

8 FUEL AND OIL

JET A1
BPTO2389 - Turbo Oil and BPTO2380 -
Turbo Oil

Oxygen and related servicing – by arrangement
with SATA Air Açores Maintenance

9 REPARAÇÃO/MANUTENÇÃO

Mediante acordo com SATA Air Açores-
Manutenção
Tel: +.351.296.287412
FAX: +.351.296.287574
SITA: PDLMXSP

**10 COMBATE INCÊNDIOS
CATEGORIA**

CAT 7

CAT 8 e CAT 9 - Disponível por requisição e
acordo prévio com a Direção do Aeroporto.

11 RESTRIÇÕES LOCAIS**Obstáculos no Aeródromo:**

Área 2

LPPD 01 Edifício
Elevação: 85M Altura: 6M
374452.97N 0254249.09W

LPPD 02 Edifício
Elevação: 87M Altura: 7M
374453.60N 0254249.87W

LPPD 03 Edifício
Elevação: 89M Altura: 9M
374453.93N 0254250.17W

LPPD 04 Edifício
Elevação: 89M Altura: 9M
374454.03N 0254250.42W

LPPD 05 Terreno
Elevação: 963M
374539.54N0252930.50w

12 PROCEDIMENTOS**Procedimento de Voo:**

O solo ergue-se significativamente a NW
da berma, em especial na extensão da
RWY30. Os pilotos devem ter atenção
especial na aproximação visual

(circuito direito) para a RWY12, nas
aproximações falhadas e descolagens da
RWY30.

Um conjunto de 8 luzes brancas
intermitentes, não sequencial, alinhadas,
de alta intensidade e espaçadas 60M.

Localizadas a 6000M da Soleira da pista
12 e a 2200M à esquerda da extensão da
linha central de pista.

9 REPAIR FACILITIES

By arrangement with SATA Air Açores
Maintenance
Phone: +.351.296.287412
FAX: +.351.296.287574
SITA: PDLMXSP

10 FIRE FIGHTING CATEGORY

CAT 7

CAT 8 and CAT 9 - Available by prior
arrangements with Airport Director

11 LOCAL RESTRICTIONS**Aerodrome Obstacles:**

Area 2

LPPD 01 Building
Elevation: 85M Height: 6M
374452.97N 0254249.09W

LPPD 02 Building
Elevation: 87M Height: 7M
374453.60N 0254249.87W

LPPD 03 Building
Elevation: 89M Height: 9M
374453.93N 0254250.17W

LPPD 04 Building
Elevation: 89M Height: 9M
374454.03N 0254250.42W

LPPD 05 Terrain
Elevation: 963M
374539.54N0252930.50w

12 PROCEDURES**Flight Procedures:**

Ground rises significantly to the NW of the
Strip, specially on the RWY30 extended
centerline sector. Pilots must take special
caution on the visual approach

(right hand circuit) to RWY12 and on
missed approach and TKOF from RWY30.

A set of 8 aligned high intensity Type A
and non-sequential flashing lights, spaced
60M.

Located 6000M from THR 12 and 2200M
left side of extended centre line.

Instalada para assinalar a proximidade de um obstáculo natural (Costa) durante as operações de aproximação à pista 12.

Comunicações Rádio:

Mandatória a capacidade das aeronaves efectuarem comunicações rádio bilaterais.

13 INFORMAÇÃO ADICIONAL

AD Certificado 28 DEC 2017/ Ilimitada

Comunicações ATS:

TWR - Call Sign Ponta Delgada Tower

Freq: 118.300 MHz HO (Primária)
121.500 MHz HO (Emergência)

APP - Call Sign Ponta Delgada approach

Freq: 119.400 MHz HO (Primária)
121.500 MHz HO (Emergência)

ATIS Call Sign Ponta Delgada Information
Freq 123.900MHz H24 (Tel: +351 296305658)

AJUDAS RÁDIO

Locator PD 351KHz H24
Declinação Mag: 07° W (2020)
374406.1N0254030.2W
Cobertura 25NM

Corte de Relva:

O corte da relva ocorrerá ao longo das Faixas da RWY 12/30, de segunda a domingo, das 06h00-23h59 (LMT).

Homens e equipamentos sob o controle da torre e supervisão da autoridade do aeroporto.

Hotéis: Na cidade

Restaurantes: AD (180 refeições por hora).
Outros restaurantes na cidade.

Transportes:

Autocarros, Taxis e Rent-a-Car no Aeródromo

Saúde:

Primeiros Socorros e ambulância no Aeródromo.

Hospital na cidade (2 KM (1.08NM do Aeródromo)

Installed to indentify natural obstacle (Coast) proximity during RWY 12 approach operations.

Radio Communications

Mandatory to aircraft capable of maintaining two way radio communications.

13 ADDITIONAL INFORMATION

Certified AD 28 DEC 2017 / Unlimited

ATS Communication Facilities:

TWR - Call Sign Ponta Delgada Tower

Freq: 118.300 MHz HO (Primary)
121.500 MHz HO (Emergency)

APP - Call Sign Ponta Delgada approach

Freq: 119.400 MHz HO (Primary)
121.500 MHz HO (Emergency)

ATIS Call Sign Ponta Delgada Information
Freq 123.900MHz H24 (Phone: +351 296305658)

RADIO AIDS

Locator PD 351KHz H24
Mag Var: 07° W (2020)
374406.1N0254030.2W
Coverage 25NM

Grass Cutting:

Grass cutting will take place along Strip RWY 12/30, Monday to Sunday from 06H00-23H59 (LMT).

Men and equipment under Tower Control and Airport Authority Supervision.

Hotels: In City

Restaurants: AD restaurant (180 meals per hour).
Other Restaurants in City

Transportation:

Buses, Taxis and Rent-a-Car at Aerodrome

Medical facilities:

First Aid Treatment and 1 ambulance at Aerodrome,

Hospital in City (2 KM (1.08NM from Aerodrome)

Banco e Correios:

No Aeródromo

Bank and Post Office:

At the Aerodrome

Turismo:

No Aeródromo

Tourist Office:

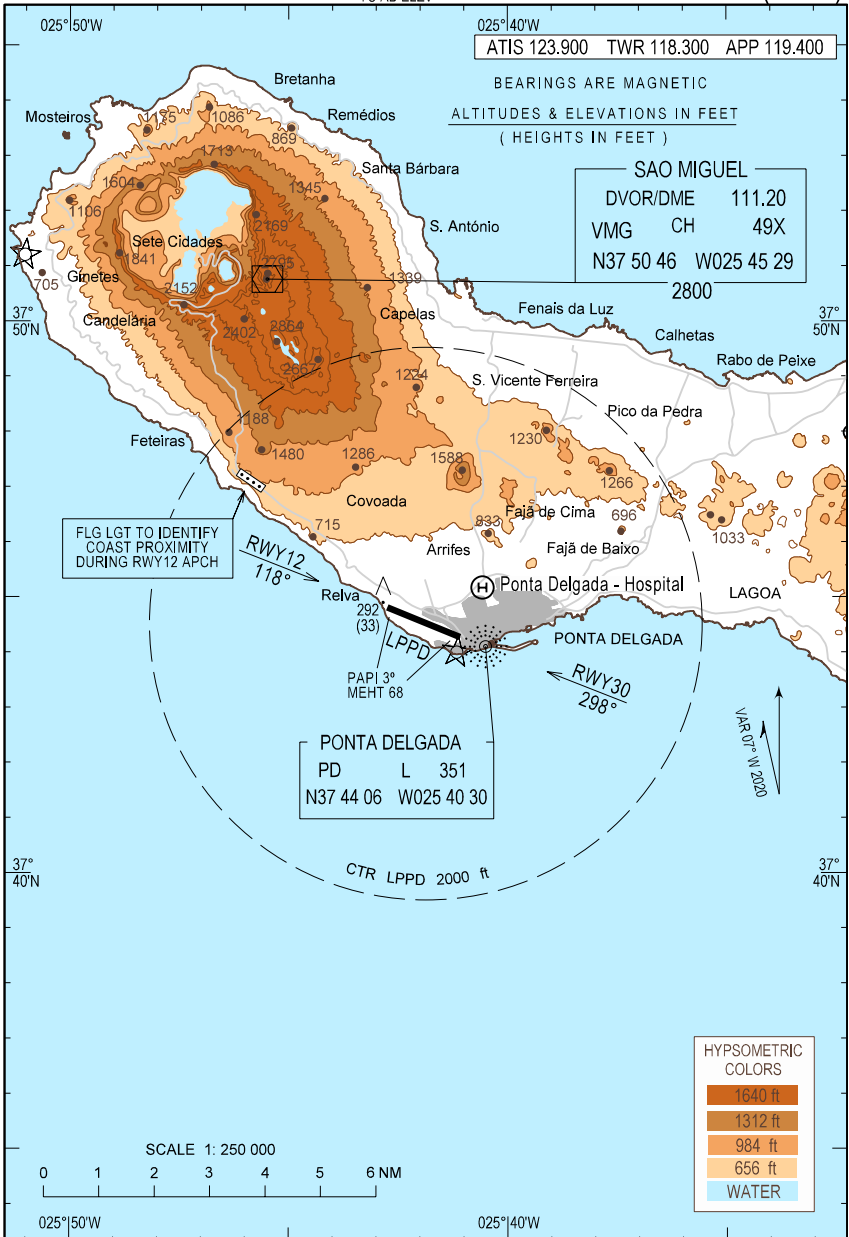
At Aerodrome

BLANK

CARTA APROXIMAÇÃO VISUAL
VISUAL APPROACH CHART

AD ELEV 259 ft
HEIGHTS RELATED
TO AD ELEV

PONTA DELGADA
João Paulo II (LPPD)



BLANK

CARTA DE AERODROMO
AERODROME CHART

AD ELEV 79 m
LAT 37°44'31"N
LONG 025°41'52"W

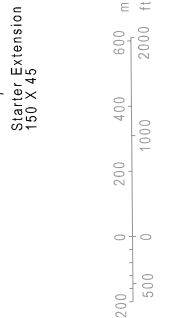
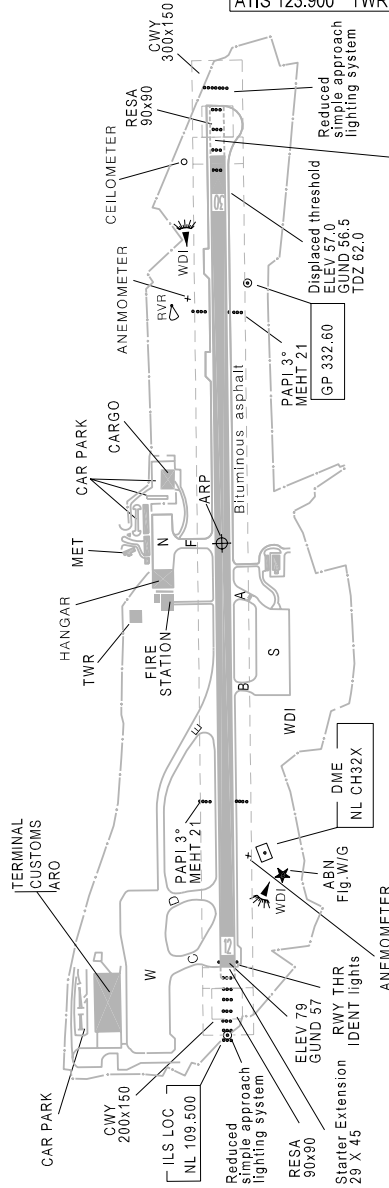
PONTA DELGADA
João Paulo II (LPPD)

ATIS 123.900 TWR 118.300 APP 119.400

ELEVATIONS AND DIMENSIONS IN METRES
BEARINGS ARE MAGNETIC



RWY	DIRECTION	THR	BEARING STRENGTH	DIMENSION	RESA	STRIP
12	118°	37°44'46"N 025°42'38"W	First 1800m PCN 62/F/B/W/T After 1800m PCN 70/F/B/W/T	2323X45	90X90	2443X150
30	298°	37°44'19"N 025°41'13"W	First 626m PCN 62/F/B/W/T After 626m PCN 62/F/B/W/T			



TWY	WIDTH	SURFACE	BEARING STRENGTH
A, B, F	23m	ASPH	In Evaluation
C, D, E	23m	ASPH	PCN 90/F/C/W/T

APRONS	SURFACE	BEARING STRENGTH
N	ASPH	PCN 29/F/B/X/T
S	CONC	PCN 17/R/C/X/T
W	CONC	In Evaluation
		PCN 70/R/B/W/T

BLANK

CARACTERÍSTICAS FÍSICAS / PHYSICAL CHARACTERISTICS						
RWY	Dimensões e pavimento Dimensions and surface	Resistência Strength	Distâncias Declaradas Declared Distances			
			TORA	TODA	ASDA	LDA
12	2323x45 ASPH	ASPH First 1800M PCN 62/F/B/W/T After 1800M PCN 70/F/B/W/T	2352*	2652	2352	2323
30	2323x45 ASPH	Asphalt First 626M PCN 70/F/B/W/T After 626M PCN 62/F/B/W/T	2473	2673	2473	2248
RWY12: SWY- NIL CWY- 300x150m STRIP-2443x150m RESA**- 90x90m ASPH						
RWY30: SWY- NIL CWY- 200x150m STRIP-2443x150m RESA - 90x90m ASPH						
Note: *Including RWY starter extension of 29M THR RWY30 permanently displaced 239M from beginning of pavement Starting Take-off point for Runway 30 is 225M before the displaced threshold, which lead to TORA of 2473M for take-off purposes. ** RESA RWY12 not fully compliant at left end between following coordinates : 374417.55N0254103.78W 374417.49N0254103.62W 374417.42N0254103.62W.						

Velocidade / Speed	RWY	Coefficiente de Fricção / Friction Coefficient	RWY
65 Km/h	12	0.82/ 0.81/ 0.84	30
95 Km/h		0.74/ 0.71/ 0.69	

ILUMINAÇÃO / LIGHTING							
RWY	APCH	PAPI	THR	END	TDZ	RCL	EDGE
12	Reduced simple Approach Lighting System LIL white barrets at 30M intervals, last distance 16M from THR, Length 223M.	- 3°, MEHT – 68 FT	Green	Red	Nil	1422M white + 600M white/red + 300M red 30M spacing variable	1753M white + 600M yellow 60M spacing variable
30	Reduced simple Approach Lighting System Simple Approach Lighting System, LIH white, length 300M with 4 barrets (each with 3 lights) spaced 60M and one cross bar (with 15 lights at 300M).	- 3°, MEHT – 68 FT	Green	Red	Nil	1379M white + 600M white/red + 300M red 30M spacing variable	160M red + 1679 white + 600M yellow 60M spacing variable

SURFACE MOVEMENT GUIDANCE AND MARKINGS						
ID SIGN	WDI	LDI	RWY MARKS	TDZ MARKS	RWY DESIGNATION	RCL
X	X Lighted		X	X	X	X